

USB to RS-232 DB9 Converter

Converts a USB port into a DB9 male RS-232 serial port.

- Perfect for PDAs, cameras, modems, and mobile phones.
- Powered by the USB port.



Customer Support Information

Order toll-free in the U.S.: Call 877-877-BBOX (outside U.S. call 724-746-5500)
FREE technical support 24 hours a day, 7 days a week: Call 724-746-5500 or fax 724-746-0746
Mailing address: Black Box Corporation, 1000 Park Drive, Lawrence, PA 15055-1018
Web site: www.blackbox.com • E-mail: info@blackbox.com

Trademarks Used in this Manual

Trademarks Used in this Manual

Black Box and the Double Diamond logo are registered trademarks of BB Technologies, Inc.

Mac and Macintosh are registered trademarks of Apple Computer, Inc.

Pentium and Intel are registered trademarks of Intel Corporation.

IBM is a registered trademark of International Business Machines Corporation.

Windows and Windows Vista are registered trademarks of Microsoft Corporation.

Any other trademarks mentioned in this manual are acknowledged to be the property of their respective owners.

We're here to help! If you have any questions about your application or our products, contact Black Box Tech Support at **724-746-5500** or go to **blackbox.com** and click on "Talk to Black Box." You'll be live with one of our technical experts in less than 30 seconds.

Federal Communications Commission and Industry Canada Radio Frequency Interference Statements

This equipment generates, uses, and can radiate radio-frequency energy, and if not installed and used properly, that is, in strict accordance with the manufacturer's instructions, may cause interference to radio communication. It has been tested and found to comply with the limits for a Class A computing device in accordance with the specifications in Subpart B of Part 15 of FCC rules, which are designed to provide reasonable protection against such interference when the equipment is operated in a commercial environment. Operation of this equipment in a residential area is likely to cause interference, in which case the user at his own expense will be required to take whatever measures may be necessary to correct the interference.

Changes or modifications not expressly approved by the party responsible for compliance could void the user's authority to operate the equipment.

This digital apparatus does not exceed the Class A limits for radio noise emission from digital apparatus set out in the Radio Interference Regulation of Industry Canada.

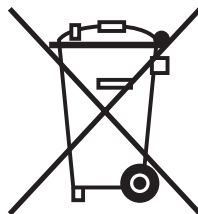
Le présent appareil numérique n'émet pas de bruits radioélectriques dépassant les limites applicables aux appareils numériques de la classe A prescrites dans le Règlement sur le brouillage radioélectrique publié par Industrie Canada.



This product complies with the EMC and Low Voltage directives of the European Community.

RoHS/WEEE

This product complies with the Restriction of Hazardous Substances (RoHS) and the Waste from Electrical and Electronic Equipment (WEEE).



blackbox.com



Instrucciones de Seguridad (Normas Oficiales Mexicanas Electrical Safety Statement)

1. Todas las instrucciones de seguridad y operación deberán ser leídas antes de que el aparato eléctrico sea operado.
2. Las instrucciones de seguridad y operación deberán ser guardadas para referencia futura.
3. Todas las advertencias en el aparato eléctrico y en sus instrucciones de operación deben ser respetadas.
4. Todas las instrucciones de operación y uso deben ser seguidas.
5. El aparato eléctrico no deberá ser usado cerca del agua—por ejemplo, cerca de la tina de baño, lavabo, sótano mojado o cerca de una alberca, etc.
6. El aparato eléctrico debe ser usado únicamente con carritos o pedestales que sean recomendados por el fabricante.
7. El aparato eléctrico debe ser montado a la pared o al techo sólo como sea recomendado por el fabricante.
8. Servicio—El usuario no debe intentar dar servicio al equipo eléctrico más allá a lo descrito en las instrucciones de operación. Todo otro servicio deberá ser referido a personal de servicio calificado.
9. El aparato eléctrico debe ser situado de tal manera que su posición no interfiera su uso. La colocación del aparato eléctrico sobre una cama, sofá, alfombra o superficie similar puede bloquea la ventilación, no se debe colocar en libreros o gabinetes que impidan el flujo de aire por los orificios de ventilación.
10. El equipo eléctrico deber ser situado fuera del alcance de fuentes de calor como radiadores, registros de calor, estufas u otros aparatos (incluyendo amplificadores) que producen calor.
11. El aparato eléctrico deberá ser conectado a una fuente de poder sólo del tipo descrito en el instructivo de operación, o como se indique en el aparato.
12. Precaución debe ser tomada de tal manera que la tierra física y la polarización del equipo no sea eliminada.
13. Los cables de la fuente de poder deben ser guiados de tal manera que no sean pisados ni pellizcados por objetos colocados sobre o contra ellos, poniendo particular atención a los contactos y receptáculos donde salen del aparato.
14. El equipo eléctrico debe ser limpiado únicamente de acuerdo a las recomendaciones del fabricante.
15. En caso de existir, una antena externa deberá ser localizada lejos de las líneas de energía.
16. El cable de corriente deberá ser desconectado del cuando el equipo no sea usado por un largo periodo de tiempo.
17. Cuidado debe ser tomado de tal manera que objetos líquidos no sean derramados sobre la cubierta u orificios de ventilación.
18. Servicio por personal calificado deberá ser provisto cuando:
 - A: El cable de poder o el contacto ha sido dañado; u
 - B: Objetos han caído o líquido ha sido derramado dentro del aparato; o
 - C: El aparato ha sido expuesto a la lluvia; o
 - D: El aparato parece no operar normalmente o muestra un cambio en su desempeño; o
 - E: El aparato ha sido tirado o su cubierta ha sido dañada.

Table of Contents

1. Specifications	6
2. Overview	7
2.1 Introduction	7
2.2 Features.....	7
2.3 What's Included	7
2.4 System Requirements	7
3. Installation	8
3.1 Windows Vista/Windows 7	8
3.2 Windows 2000/XP.....	9
3.3 Verifying the Driver Installation on Windows	10
3.4 Verifying the Driver Installation on Mac OS X.....	11
3.5 Connecting Serial Device	13

1. Specifications

Data Transfer Rate — 500 kbps

Operating Systems Supported — Windows® 98 SE/Me/2000/XP/7, Windows Vista® 32/64-bit, Mac® 10.x

Connectors — (1) USB Type A male, (1) DB9 male

Power — Bus-powered

Size — Length: 22" (55.9 cm)

2. Overview

2.1 Introduction

Use the USB to RS-232 DB9 Converter to connect your RS-232 serial devices to the USB port on your PC. Just connect the cable to the PC or hub's port, and connect the other end to an RS-232 device such as a PDA, scanner, or printer.

2.2 Features

- Complies with the USB 1.1 specification.
- Supports an RS-232 serial interface.
- Supports a 500-kbps data transfer rate.
- USB suspend condition.
- Plug-and-play compatible.
- USB host device drivers available.
- Draws its power from the USB connection—no extra power adapter required.
- Supports Windows 2000/XP/7, Windows Vista 32/64-bit, and Mac 10.x.

2.3 What's Included

Your package should contain the following items. If anything is missing or damaged, contact Black Box Technical Support at 724-746-5500 or info@blackbox.com.

- USB to RS-232 DB9 Converter
- CD-ROM containing software drivers and this user's manual

2.4 System Requirements

- IBM® compatible computer or Mac® computer
- Windows 2000/XP/7, Windows Vista 32/64-bit, or Mac 10.x
- An available USB port
- 64 MB of RAM or more
- Pentium® 233 MHz or higher

3. Installation

3.1 Windows Vista/Windows 7

NOTE: Do not connect the USB to RS-232 DB9 Converter to your computer before you install the software drivers.

1. Insert the product CD into your CD-ROM drive. Figure 3-1 appears. Run the Setup file under E:\Driver, where E: is your CD-ROM drive letter.



Figure 3-1. AutoPlay screen.

When the Welcome screen appears, click "Next."

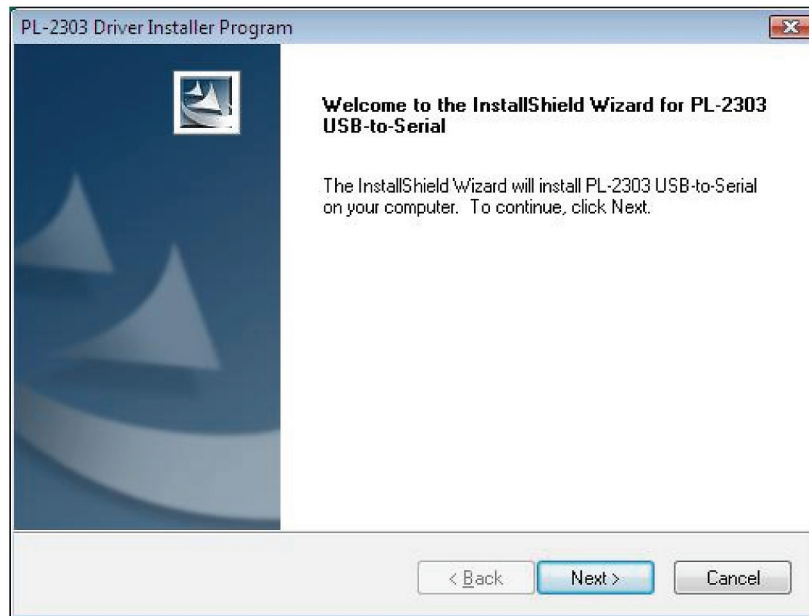


Figure 3-2. Welcome screen.

2. Click "Finish" to complete the installation. See Figure 3-3.

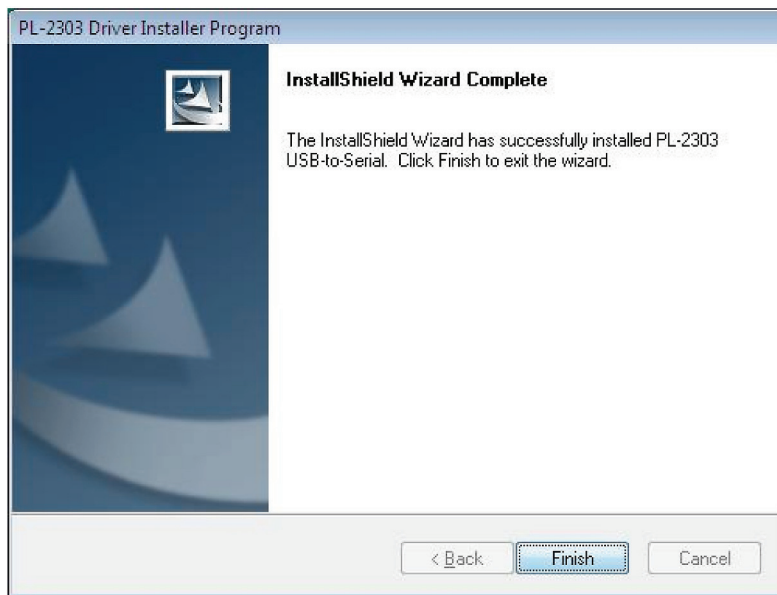


Figure 3-3. Installation complete screen.

Once the installation is complete, connect the USB to RS-232 DB9 Converter to a free USB port on your computer.

3.2 Windows 2000/XP

NOTE: Do not connect the USB to RS-232 DB9 Converter to your computer before you install the software drivers.

1. Insert the provided CD into your CD-ROM drive. When the Welcome screen appears, click "Next."

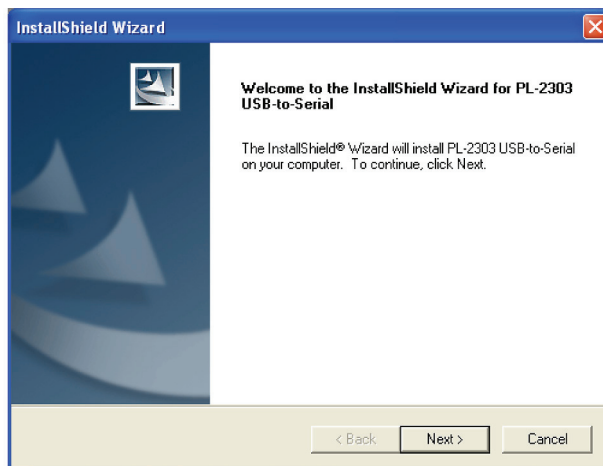


Figure 3-4. Welcome screen.

2. When the screen shown in Figure 3-5 appears, click “Finish.”

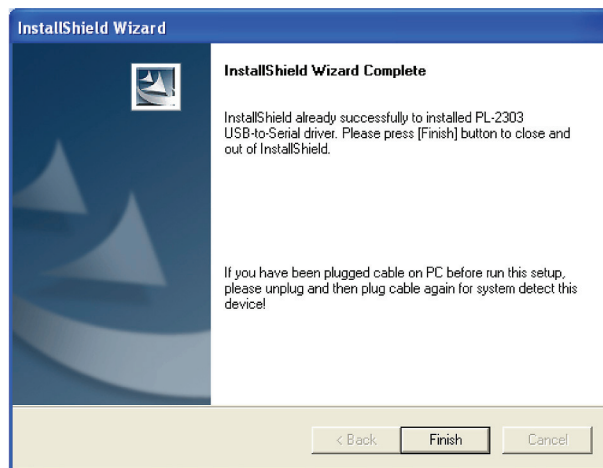


Figure 3-5. Installation complete screen.

Once the installation is complete, connect the USB to RS-232 DB9 Converter to a free USB port on your computer.

3.3 Verifying the Driver Installation on Windows

To verify the converter installation, follow the instructions below to launch Device Manager.

- On Windows 2000/XP: Right-click the “My Computer” icon on the desktop and select “Properties > System > (Hardware) > Device Manager.”
- On Windows Vista/Windows 7: Right-click the “Computer” icon on the desktop and select “Properties > Device Manager.”

In the Ports (COM & LPT) group, a string similar to “USB to Serial Port” or “Prolific USB to Serial Comm Port” displays.

NOTE: If there is a question or exclamation mark next to that item, then the driver is not properly installed. Delete the item and repeat the installation steps.

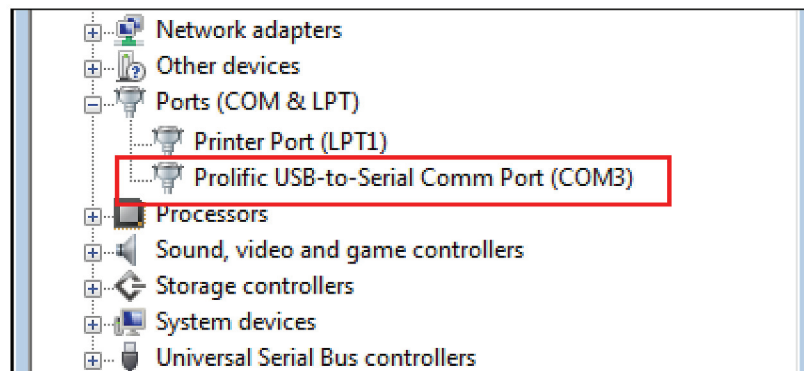


Figure 3-6. Selecting the ports.

3.4 Verifying the Driver Installation on Mac OS X

The provided Mac X driver supports:

- Mac OS 10.1 and above for PowerPC based Mac
- Mac OS 10.4 and above for Intel® based Mac

To install the drivers:

1. Insert the provided driver CD into your CD-ROM drive. Double-click the CD icon on the desktop and navigate to the `\Driver\MacX` directory. Copy and paste the `PL2303_1.1.1r2.dmg` file to the desktop.
2. Double-click the dmg file on the desktop to extract the file. Then double-click the `PL2303_1.2.1` file that is extracted.
3. When the Welcome screen appears, click "Continue." See Figure 3-7.

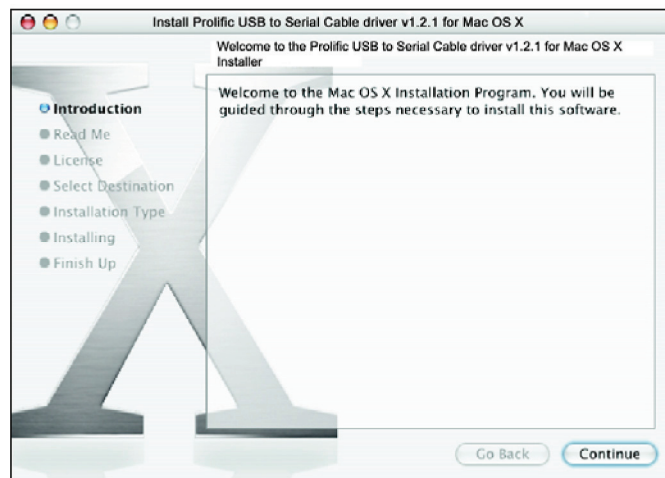


Figure 3-7. Welcome screen.

4. Select a destination disk to install the driver and click "Continue." See Figure 3-8.

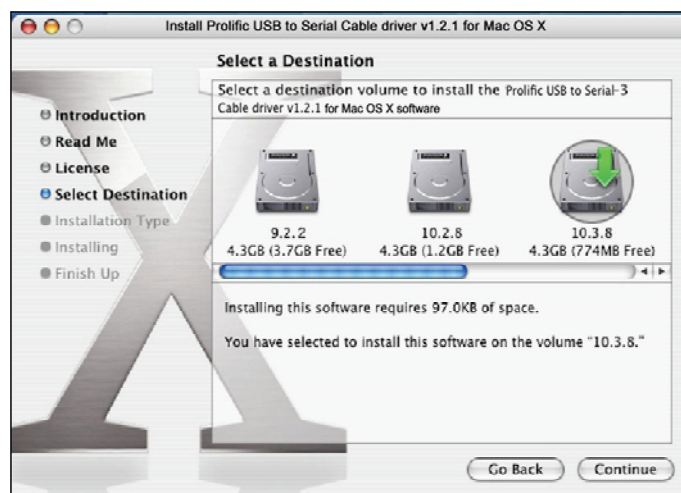


Figure 3-8. Select a Destination screen.

Chapter 3: Installation

5. Click "Install."

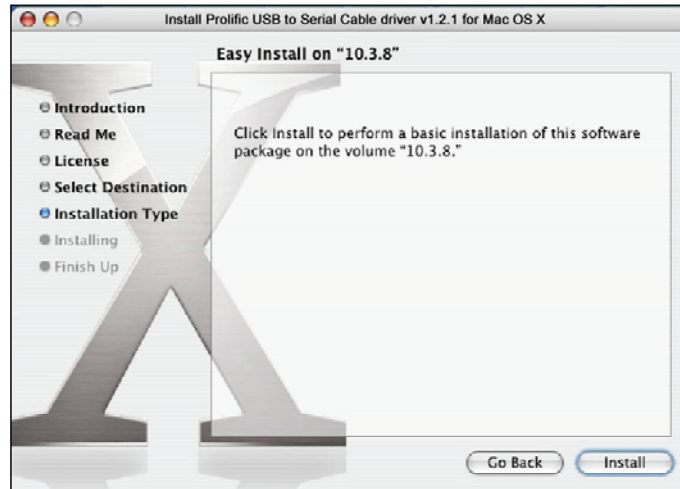


Figure 3-9. Install screen.

6. When the Authenticate screen appears, enter your password in the provided field and click "OK." See Figure 3-10.



Figure 3-10. Authenticate screen.

7. Click "Continue Installation." See Figure 3-11.

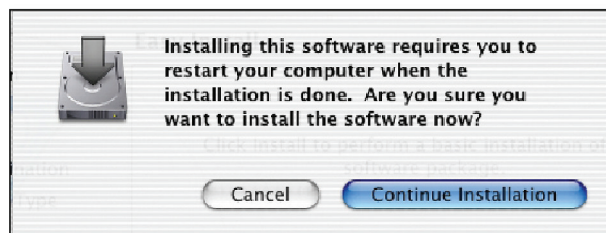


Figure 3-11. Continue Installation screen.

8. Click “Restart” to finish installing the driver and reboot your Mac.

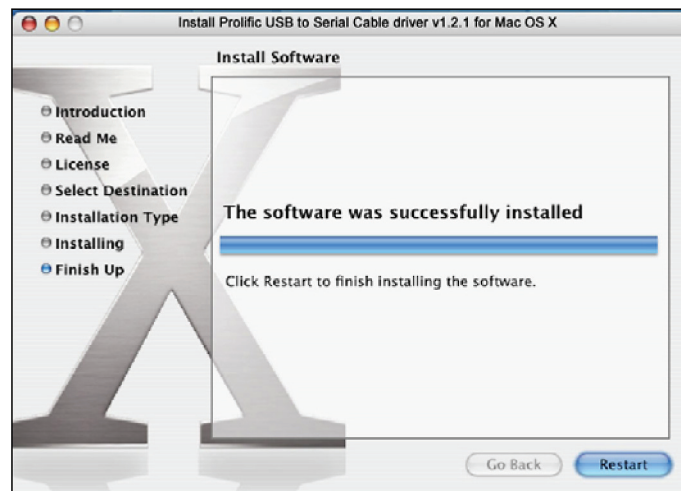


Figure 3-12. Restart button.

9. Connect the converter to a free USB port on your Mac.

10. To verify the installation: Go to “Apple System Profiler > Extensions.” You should find ProlificUSBSerial among the list. This means that the installation is successful.

3.5 Connecting the Serial Device

Now you can connect your RS-232 device to the converter. If prompted to install the driver for your serial device, follow the instructions in the manual that you received with your serial device to complete the installation.

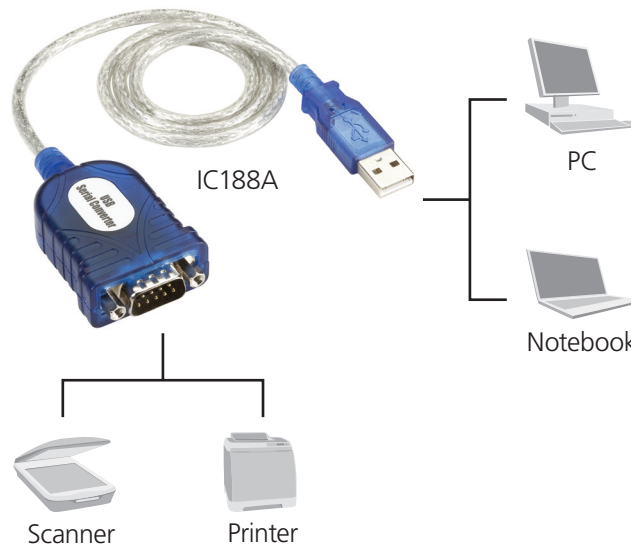


Figure 3-13. Serial device connection.

Black Box Tech Support: FREE! Live. 24/7.

Tech support the
way it should be.



Great tech support is just 30 seconds away at 724-746-5500 or blackbox.com.



About Black Box

Black Box provides an extensive range of networking and infrastructure products. You'll find everything from cabinets and racks and power and surge protection products to media converters and Ethernet switches all supported by free, live 24/7 Tech support available in 30 seconds or less.

© Copyright 2011. Black Box Corporation. All rights reserved.

IC188A, version 1

724-746-5500 | blackbox.com